



PARKINSONISME  
VERENIGING

# Sparks

PICTURES AND PRESENTATION  
BY [MARINA NOORDEGRAAF](#)



Pesticides

Pasticides

Particides

Parkicides

Parkicides

Parkinides

Parkinsdes

Parkinsoes

Parkinsons

Parkinson's

## PARKINSONS' DISEASE (PD)

- OLD MEN WITH SHAKING HANDS?
- MOTORIC, PSYCHOLOGICAL, SOCIAL, COGNITIF SYMPTOMS
- FASTEST GROWING NEUROLOGICAL DISEASE
- CHRONIC AND PROGRESSIVE, NO CURE
- LOSS UPON LOSS

- CAUSES? MAN MADE'S DISEASE
- CHEMICALS
- HEAVY METALS (FIRST CASES AROUND MINES IN 1817)
- GENETIC
- HEAD INJURY
- DISTURBANCE OF THE MICROBIOME
- MULTI FACTOR DISEASE



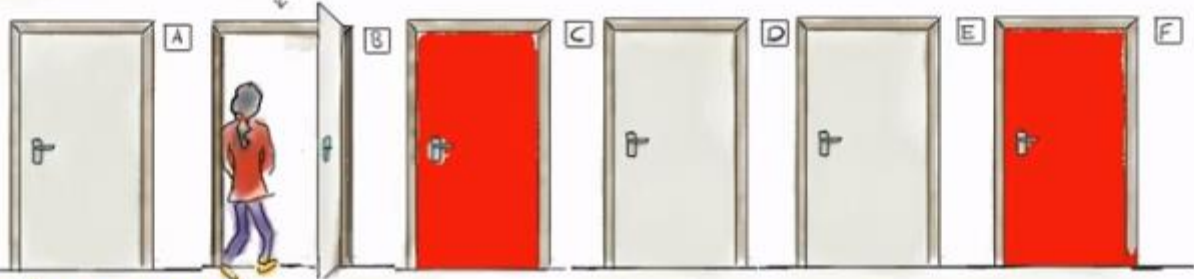
Bollenpellen  
op 15e



**15 jaar oud**

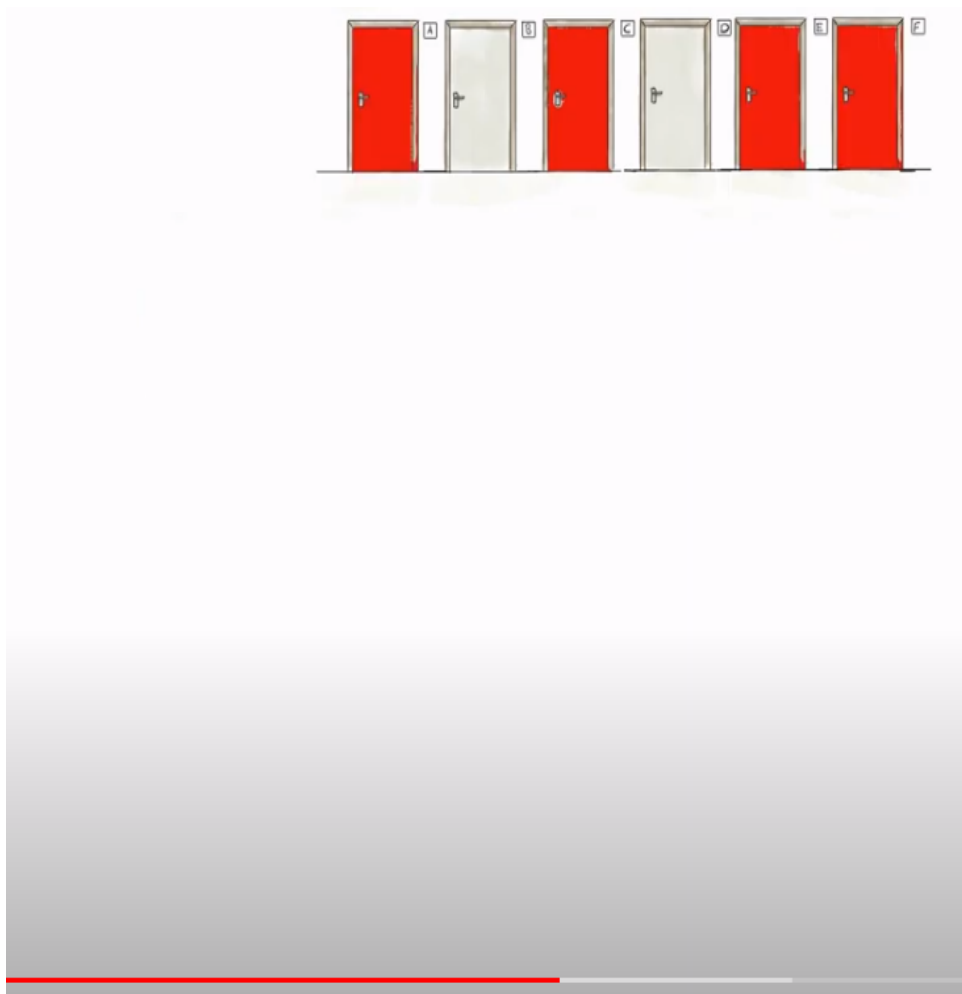


4 jaar werken met glaslaat



**32 jaar oud**











WHY AM I HERE?

WHY SO ACTIVE WITH OUR PATIENT ASSOCIATION?

ON TV – A FARMER AND HIS SON

WE COLLECTED STORIES OF MEMBERS - LINK PD AND PESTICIDES

AND I AIDED MARINA, WHO JUST LIKE ME, SUSPECTS PESTICIDES RUINED OUR HEALTH.



A PILE OF LITERATURE & 3 CONCLUSIONS



# CONCLUSION I

EXPOSURE TO PESTICIDES

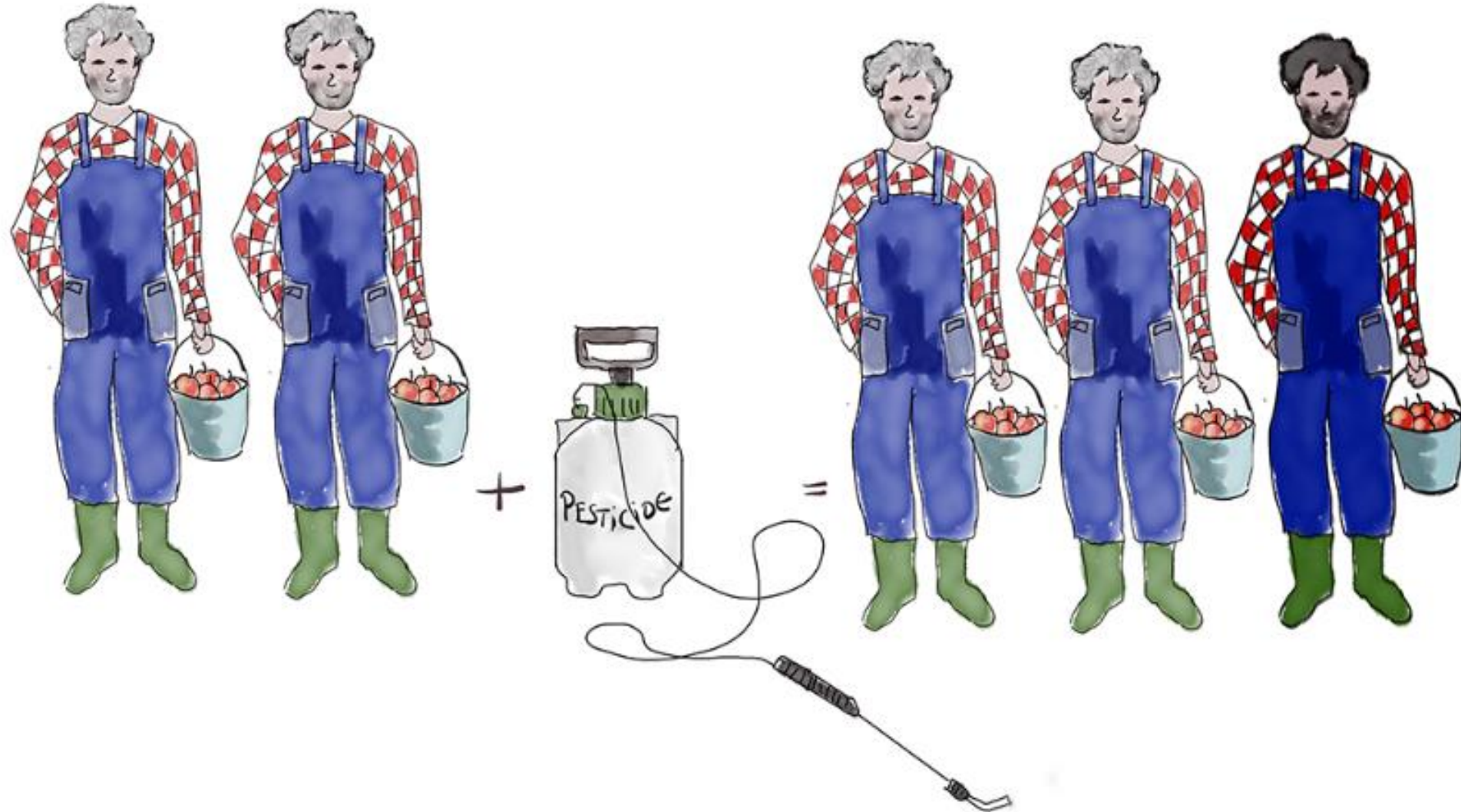
INCREASES THE CHANCES OF GETTING PARKINSON'S

FOR EVERY 2 PEOPLE WHO CONTRACT PARKINSON'S ANYWAY ...



FOR EVERY 2 PEOPLE WHO CONTRACT PARKINSON'S ANYWAY ...

... 1 EXTRA GETS PD WHILE WORKING WITH PESTICIDES



# CONCLUSION II

EXPOSURE TO PESTICIDES

HASTENS THE AGE OF ONSET OF PARKINSON'S



PEOPLE WITH PARKINSON'S DISEASE  
THAT HAVE BEEN CHRONICALLY EXPOSED TO  
PESTICIDES IN THE PAST....



PEOPLE WITH PARKINSON'S DISEASE  
THAT HAVE BEEN CHRONICALLY EXPOSED TO  
PESTICIDES IN THE PAST....



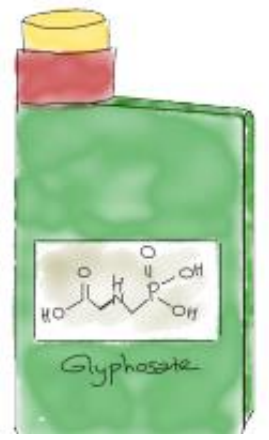
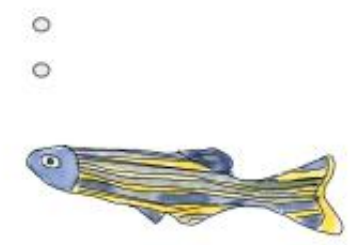
... HAVE - ON AVERAGE - CONTRACTED THE  
DISEASE FIVE YEARS EARLIER THAN THEIR  
NON-EXPOSED PARKIE COLLEAGUES

# CONCLUSION III

THE TWO MOST COMMONLY USED PESTICIDES IN THE NETHERLANDS  
HAVE (NEURO)TOXIC EFFECTS

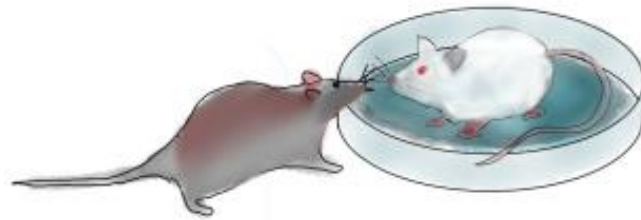
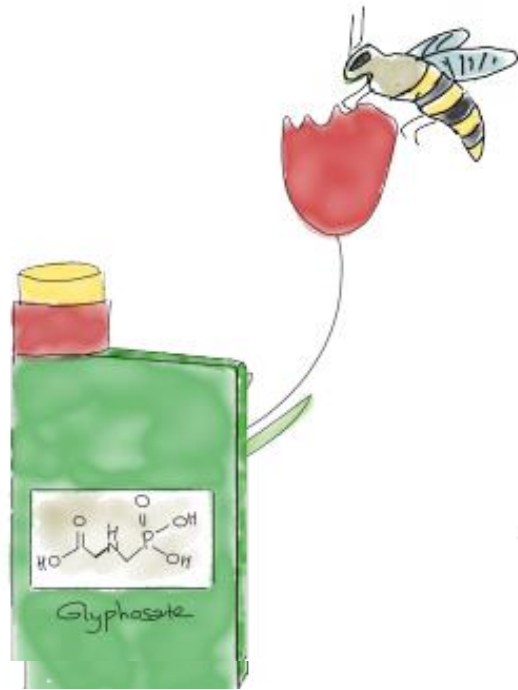
# GLYPHOSATE

- ❑ AFFECTS THE ZEBRAFISH'S MEMORY AND MAKES IT PASSIVE
- ❑ IS LINKED TO CASES OF PARKINSONISM
- ❑ LEADS TO HEALTH EFFECTS IN FUTURE GENERATIONS OF RATS THAT HAVE NEVER BEEN EXPOSED THEMSELVES



# GLYPHOSATE

- ❑ CHANGES THE INTESTINAL FLORA OF BEES AND INCREASES SUSCEPTIBILITY TO DISEASE AND DEATH
- ❑ LEADS TO A DIFFERENT COMPOSITION OF THE INTESTINAL BACTERIA IN MICE, RATS AND CHICKENS AS WELL. THIS LEADS NOT ONLY TO VULNERABLE HEALTH BUT ALSO TO ANXIOUS AND DEPRESSIVE BEHAVIOUR



# PARKINSONS' ASSOCIATION?

- WE COLLECT STORIES FROM PEOPLE WHO SUSPECT THAT THEIR DISEASE IS (PARTLY) CAUSED BY PESTICIDES
- WE LINK THESE STORIES TO MEDIA TO GIVE THE ARTICLES AND BROADCASTS A REALISTIC PATIENT LEVEL CONTENT
- WE WORK TOGETHER WITH SCIENTISTS, FUNDRAISERS, HEALTHCARE PROVIDERS
- CAMPAIGNS FOR AWARENESS, WITH PARTNERS LIKE PAN, ENVIRONMENTAL NGO'S, WORKERS UNION
- POLITICAL LOBBY
- WE WANT TO PREVENT AS MUCH NEW CASES OF PARKINSONS AS POSSIBLE

SO WHILE WE WAIT FOR OUR GOUVERNEMENTS TO DECIDE ON OUR HEALTH...

ARE WE SUFFICIENTLY PROTECTING THE VULNERABLE ?

